



King County

King County Equity and Social Justice: Expanding opportunity for immigrants & refugees

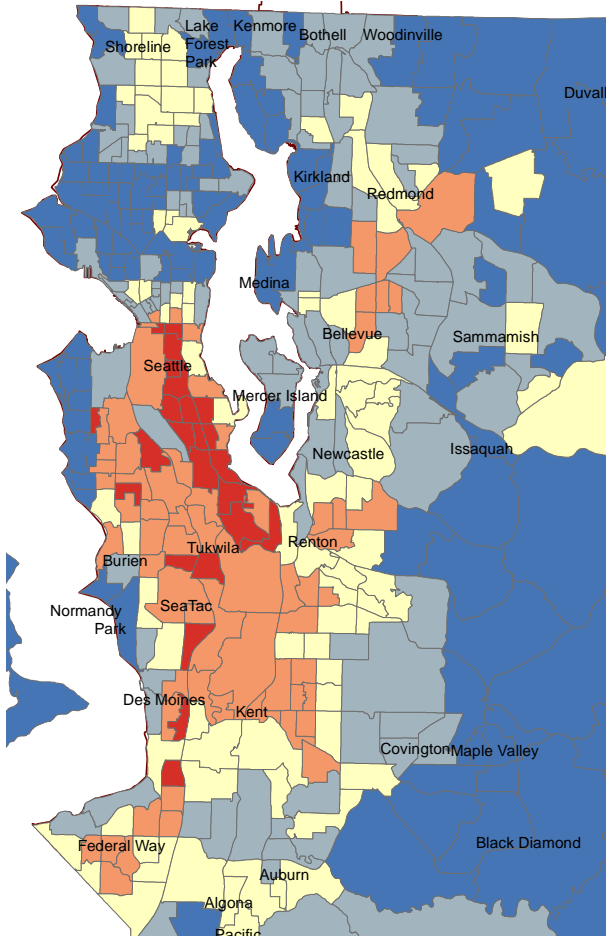
WASCLA Summit
October 25, 2014

Matias Valenzuela, PhD
Manager, King County Equity & Social Justice
Manager, Community Engagement & Partnerships, Public Health

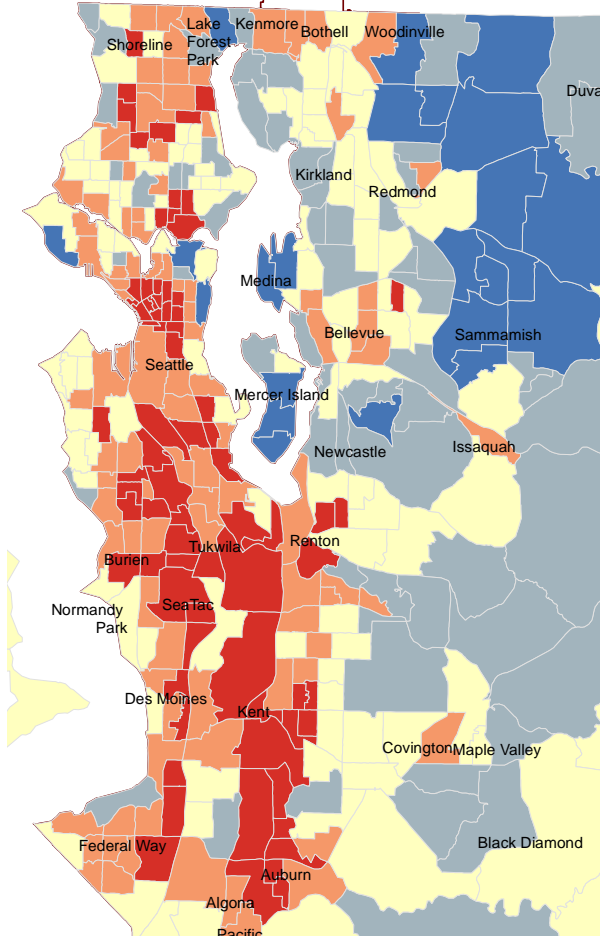


Demographics Across King County

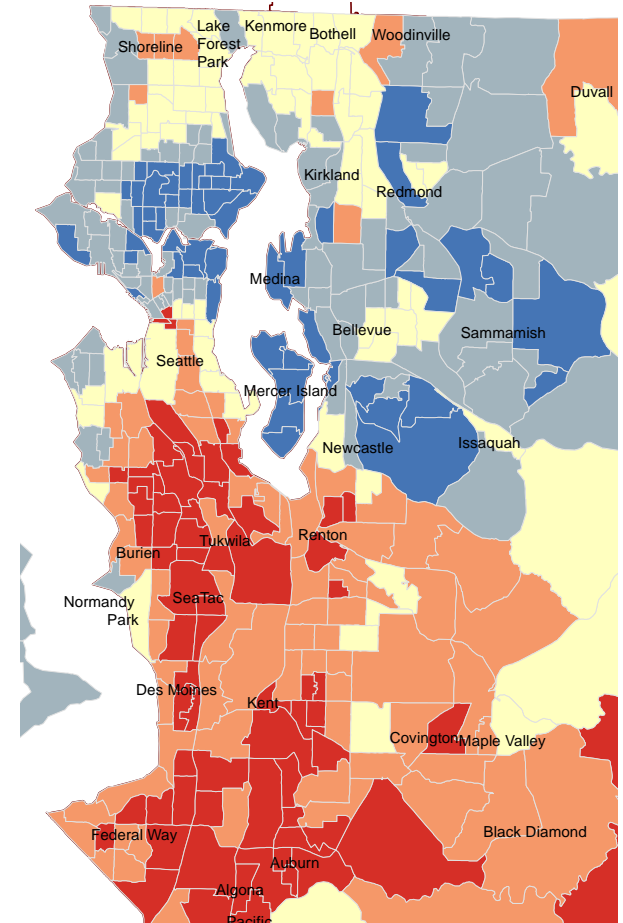
People of Color



Low Income



Low Educational Attainment



King County Equity & Social Justice

Integrated and Intentional: Strategic Plan and Ordinance





Equity lens:

- policies and decision-making
- organizational practices
- community engagement

Budgets and business plans



Transit strategic plan and allocation of routes

OUR WET, WINDY WEATHER ISN'T OVER YET

SEE STORY BELOW



INCREASING
rain, breezy late.
High 45, low 38.
— LOCAL 88

The Seattle Times



WEDNESDAY
DECEMBER 20, 2006
Metro Edition

50¢ King, Pierce, Snohomish, Island, Kitsap
and Thurston counties | 75¢ elsewhere

INDEPENDENT AND LOCALLY OWNED SINCE 1896 | seattletimes.com

If you don't have electricity



Do not burn charcoal or use gasoline generators indoors, including the garage. Never use gas ovens to heat your home. Do not use gas or kerosene heaters in closed rooms.

These things produce deadly carbon monoxide, which has killed several people since Thursday's storm.

For more information, call:
1-800-222-1222

Note to readers

Carbon-monoxide poisoning has killed six people and sickened scores of others in our community since Thursday's storm. In hope of preventing more tragedies, The Seattle Times, in cooperation with Public Health — Seattle & King County, has dedicated the top of today's front page to warning local residents in their native languages. In addition, you can help spread the word among your friends and neighbors. Use this page, or look online at seattletimes.com for a printable

Nếu quý vị không có điện

Không đốt than củi hoặc dùng máy phát điện chạy bằng xăng trong nhà, kể cả nhà đậu xe. Không bao giờ nên dùng bếp lò đun ga để sưởi ấm nhà. Không dùng lò sưởi chạy bằng khí ga hoặc kerosene trong các phòng khép kín. Các chất này tạo ra khí carbon monoxide gây chết người và đã gây tử vong cho nhiều người kể từ cơn bão hôm thứ Năm.

Để biết thêm chi tiết, xin gọi số 1-800-222-1222.

(Vietnamese translation)

如果你家裏 斷電

切勿在室內（包括在車房內）燒炭或燒用汽油發電機。切勿在家裏使用煤氣爐取暖。

切勿在密封的房間裏使用煤氣或煤油取暖器。這些產品會產生致命的一氧化碳，自週四的風暴至今，已有數人因一氧化碳中毒而死亡。

若欲瞭解詳情，請撥打 1-800-222-1222。

(Chinese translation)

Si usted no tiene electricidad

No queme carbón ni use generadores con gasolina dentro de la casa, esto incluye el garaje. Nunca use hornos a gas para calentar su casa. No use calentadores a gas o querosén en habitaciones cerradas. Estas cosas producen monóxido de

Если у вас прекратилась подача электроэнергии

Во внутренних помещениях, в том числе в гараже, не жгите древесный уголь и не пользуйтесь генераторами, работающими на бензине. Не применяйте в закрытом помещении газовые или керосиновые обогреватели. Эти устройства вырабатывают смертоносный угарный газ, от которого с тех пор, как в четверг пронеслась буря, погибли несколько человек.

За дополнительной информацией обращайтесь по телефону 1-800-222-1222.

(Russian translation)

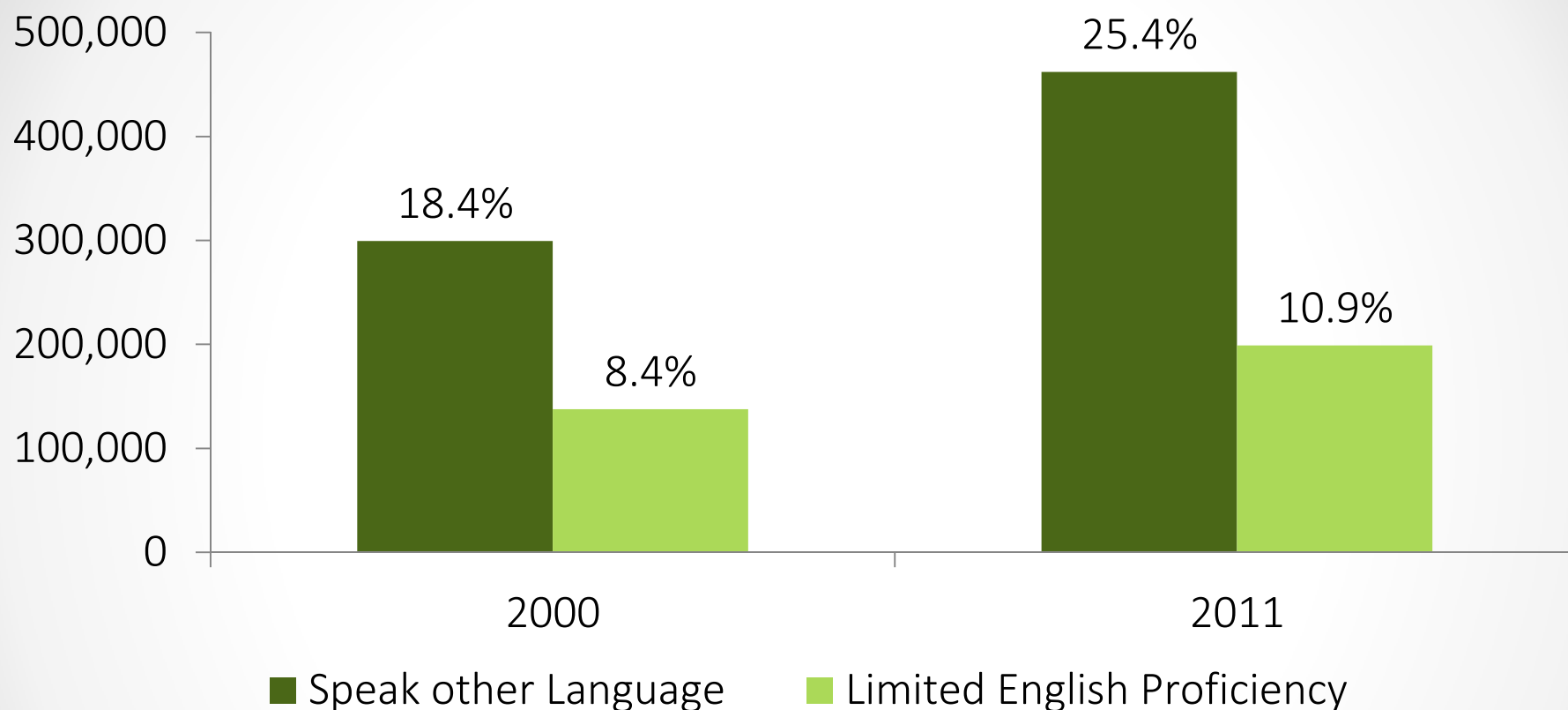
Haddii ay Koronradu kaa Maqantahay

Ha ku shidin dhuxusha ama matoorka korontada dhaliya aqalka gudhiisa, oo uu ku jiro garaashka. Marba ha u isticmaalin foornada gaaska ku shaqaysa in aad aqalka ku kululeysid. Ha ku isticmaalin qolalka xiran gaaska ama kuleyliyaasha ku shaqaysa kerosene-ka. Waxyaabahan waxaa ay dhaliyaan carbon monoxide-ka lagu dhinto, kaasoo dhowr qof dilay tan iyo duufaanankii Khamiistii.

Haddii aad macluumaad dheeraad ah doonaysid, waxaad wacdaa 1-800-222-1222.

(Somali translation)

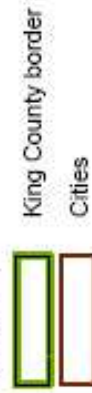
Increasing Language Diversity



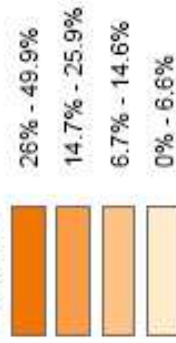
King County Languages Other Than English		
	2000	2011
Speak other Language	299,600	462,200
Limited English Proficiency	137,700	199,100

Percent of Population Speaking English Less Than "Very Well" by Census Tract, with Cities, King County, 5-year Average 2008-2012

Legend



Percent

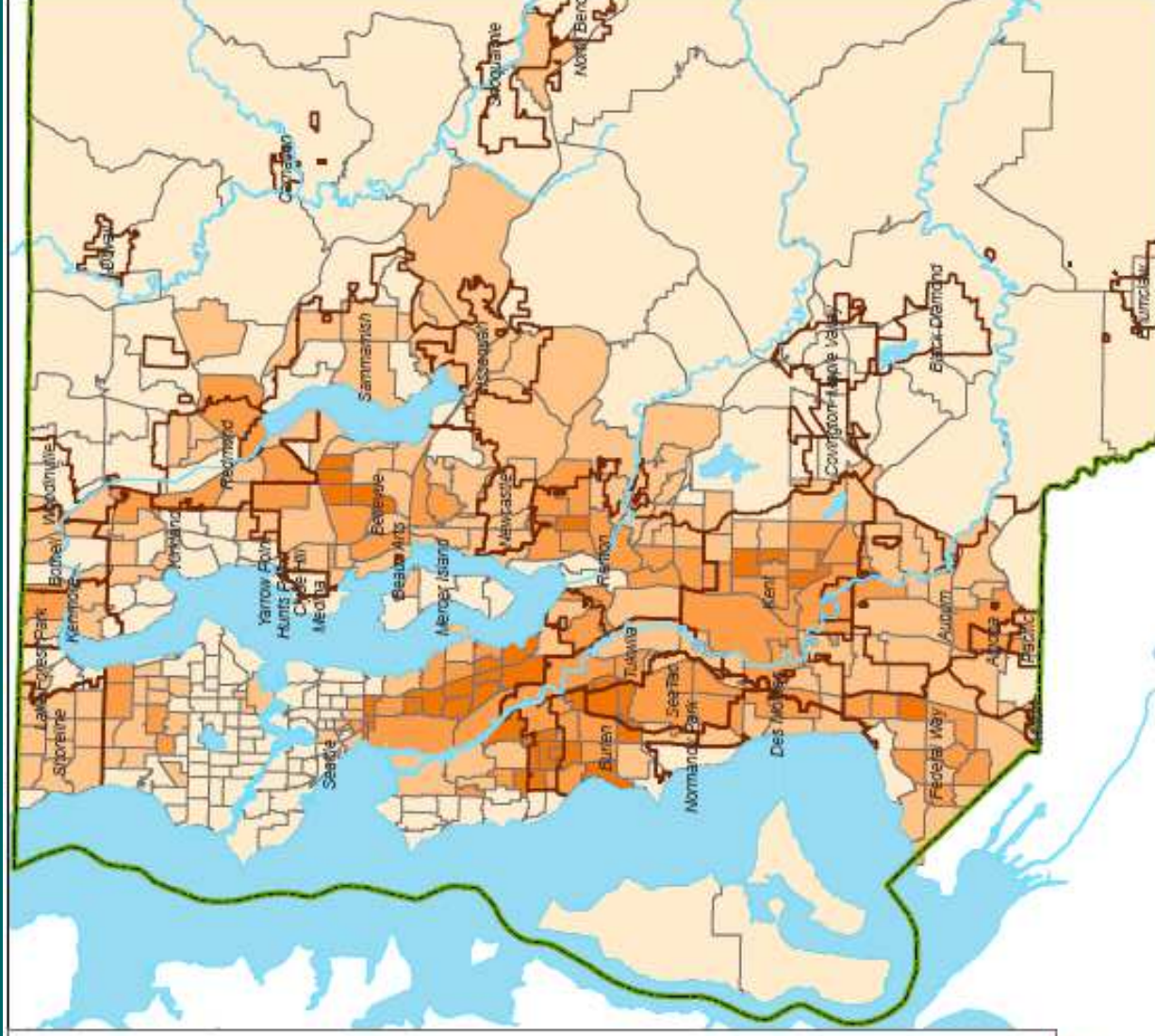


King County average: 10.9%



Public Health
Seattle & King County

Percent = For the population age 5 and older speaking a language other than English at home, the percent who speak English less than "very well" (i.e. "well", "not well" or "not at all")
Data Source: US Census Bureau, 2008-2011 American Community Survey
Produced by: Public Health - Seattle & King County; Assessment, Policy Development & Evaluation Unit, 8/14/2014



King County Translation Executive Order

- Review printed materials for broad distribution for cultural and linguistic appropriateness
- All departments identify vital documents, and translate vital documents and Public Communication Materials
- Targeted materials (5% or more of population)
- Alternative forms of assistance, instead of translation, when effective
- Certified translators AND reviewer

Top King County languages & groups

Tier 1	Tier 2	Tier 3
Spanish	Vietnamese Russian Somali Chinese Korean Ukrainian Amharic Punjabi	Tagalog Cambodian Laotian Japanese Hindi Arabic Farsi Tigrigna Oromo French Samoan

Sources: American Community Survey, US Census Bureau (2006-8), WA OSPI, King County WIC interpretation requests and Public Health Clinic visits , King County District Court

"Prevent Poisoning from Carbon Monoxide" -- printable flyers in Adobe PDF format



- English
- Amharic
- Arabic
- Bosnian
- Burmese
- Cambodian
- Chinese
- Farsi
- French
- Hmong
- Korean
- Laotian

- Oromo
- Portuguese
- Punjabi
- Romanian
- Russian
- Somali
- Spanish
- Swahili
- Tagalog
- Tigrigna
- Ukrainian
- Vietnamese

Translation and interpretation

Resources for employees

How do I...

Write a translation work order

- If under \$5,000
- If over \$5,000
- If over \$25,000

Get a Sign Language interpreter

Get an interpreter for a community event

Find the main languages in King County

Read disability access fact sheets



Providing information to people and communities with limited English proficiency

As a King County employee, what am I required to do?

Under our Translation Policy requirement (Executive Order), we are required to translate "public communication materials" and "vital documents" into at least Spanish and then other target languages based on the language maps (>5% of the population). You should also consider other languages based on the goals of your project and interests of the community.

Please check out our links to learn more about approved vendors, language maps, the tier of the most common languages in King County, and other resources on translation, interpretation and sign language.

Language line interpreters

Translation vs. interpretation

Translation best practices



Translation

Find authorized vendors/translation agencies

Learn more about the Executive Order on Translation

Learn more about the translation process



Interpretation

Language line services

Information on court interpreters

Information on Sign Language Interpreters

King County's Community Engagement Guide

Levels of Community Engagement

We inform	We consult	We engage in dialogue	We and community work together	Community directs action
Characteristics of Engagement				
<ul style="list-style-type: none"> Primarily one-way channel of communication One interaction Term-limited to event Addresses immediate need of county and community 	<ul style="list-style-type: none"> Primarily one-way channel of communication One to multiple interactions Short to medium-term Shapes and informs county programs 	<ul style="list-style-type: none"> Two-way channel of communication Multiple interactions Medium to long-term Advancement of solutions to complex problems 	<ul style="list-style-type: none"> Two-way channel of communication Multiple interactions Medium to long-term Advancement of solutions to complex problems 	<ul style="list-style-type: none"> Two-way channel of communication Multiple interactions Medium to long-term Advancement of solutions to complex problems
Strategies				
Media releases, brochures, pamphlets, outreach to vulnerable populations, ethnic media contacts, translated information, staff outreach to residents, new and social media	Focus groups, interviews, community surveys	Forums, advisory boards, stakeholder involvement, coalitions, policy development and advocacy, including legislative briefings and testimony, workshops, community-wide events	Co-led community meetings, advisory boards, coalitions, and partnerships, policy development and advocacy, including legislative briefings and testimony	Community-led planning efforts, community-hosted forums, collaborative partnerships, coalitions, policy development and advocacy including legislative briefings and testimony

King County Equity & Social Justice
www.kingcounty.gov/equity

- Equity Impact Review Tool, Community Engagement Guide and Language Access Resources, including Translation Policy

Contact:
Matias.Valenzuela@KingCounty.gov

